



MONTHLY MEMBERSHIP PROGRESS REPORT

District 2 T3

Results as of: 12/31/2016

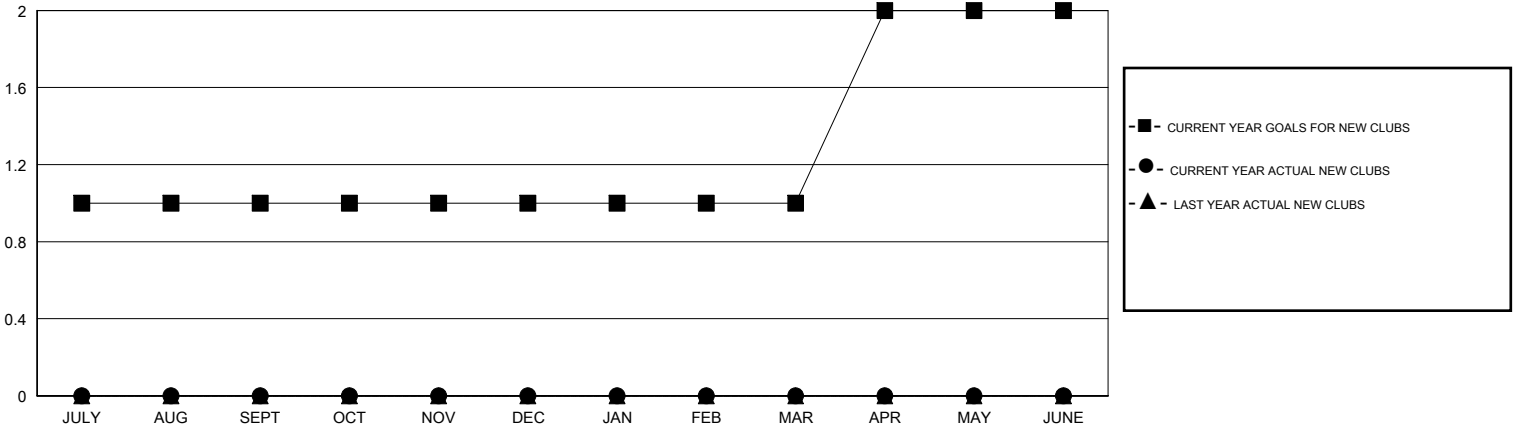
GMT: HAL GRIFFIN

LOCATION TEXAS

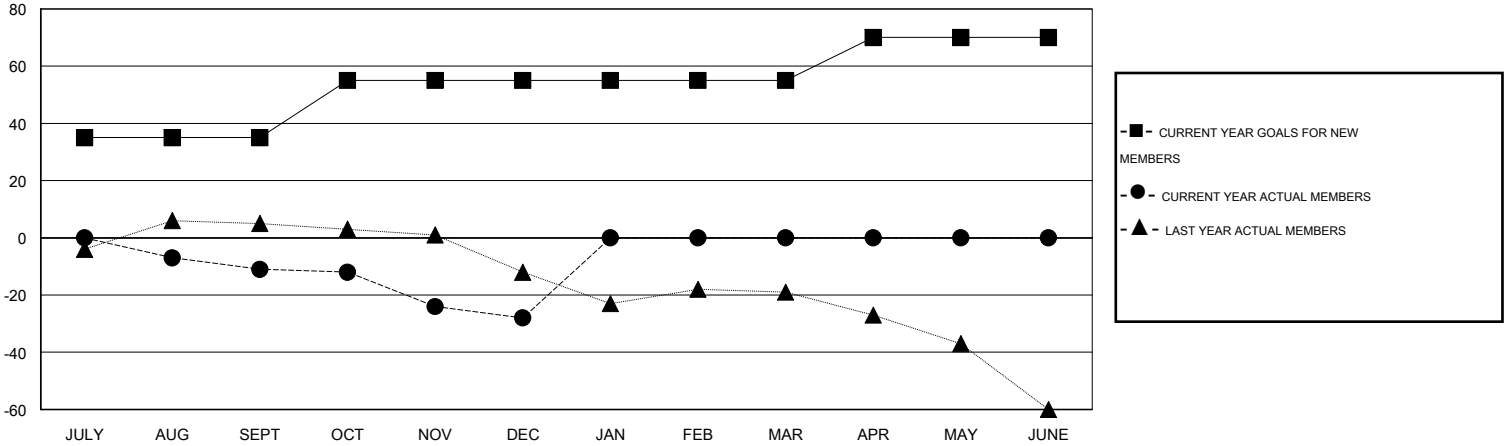
GMT CA 1

Clubs					Members				
RESULTS FOR 2016-2017					RESULTS FOR 2016-2017				
QUARTER	NEW CLUB GOAL	NEW CLUBS	DROPPED CLUBS	NET GAIN/LOSS	QUARTER	NEW MEMBER GOAL	CHARTER AND NEW MEMBERS ADDED	DROPPED MEMBERS	NET GAIN/LOSS
JULY/AUG/SEPT	1	0	0	0	JULY/AUG/SEPT	35	15	26	-11
OCT/NOV/DEC	0	0	0	0	OCT/NOV/DEC	20	16	33	-17
JAN/FEB/MAR	0	0	0	0	JAN/FEB/MAR	0	0	0	0
APR/MAY/JUNE	1	0	0	0	APR/MAY/JUNE	15	0	0	0

GOALS AND ACTUAL NEW CLUBS CUMULATIVE



GOALS AND ACTUAL MEMBERS CUMULATIVE



DROPPED CLUBS: 0	12 CLUBS OF 33 ADDED 1 OR MORE NEW MEMBERS	<u>GENDER DISTRIBUTION</u> MALE 457 (60.77%) FEMALE 295 (39.23%)
<u>DROPPED MEMBERS</u> DECEASED 11 CLUB CANCELLED 0 OTHER 48 TOTAL 59	CLICK HERE FOR HEALTH ASSESSMENT DATA	FAMILY UNIT MEMBERS 112 HEAD OF HOUSEHOLD 53 NON-HEAD OF HOUSEHOLD 59